



Partnership Plan

2011 to 2012



FOREWORD



I am delighted as Chair of the West Lancashire Community Safety Partnership (CSP) to introduce our refreshed Partnership Plan for West Lancashire. This Partnership Plan is a key strategic and operational document and reflects our community safety priorities. It is refreshed annually to ensure we are focussed on current issues.

Our Partnership has a proven track record for meeting government targets and between 2008-2011 we have met our locally agreed Home Office Public Sector Agreement 23 (PSA 23) crime targets with significant reductions in key areas. We are now in a changing community safety landscape and the coalition government have removed central targets with the expectation that local CSP's will set their own targets to meet locally identified needs. The key message from the Home Office is for 'local professionals to focus on local priorities and work with the police to cut crime.' In 2012 CSP's will be held to account by a Police and Crime Commissioner.

Over the past 3 years we have focused our resources on delivering against the PSA 23 targets and responding to emerging issues that affect our local communities. We have successfully developed partnership working and continually strive to improve community engagement and participation. We recognise there are significant social and economic challenges ahead and we understand that the fear of crime and anti-social behaviour remains disproportionately high compared to recorded levels of crime.

We have however achieved a consistently high level of satisfactory responses to the borough councils Citizens Survey. In 2010 three quarters of respondents agreed that West Lancashire is a safe and secure place to live (75%) and two thirds agree that investing in community safety contributes to improving West Lancashire residents' quality of life (66%). The CSP is committed to tackling crime and will continue to work with our partners to reduce the fear of crime even further.

We will continue to work to embrace the six hallmarks of effective partnerships; empowered and effective leadership, visible and constructive accountability, intelligence-led business processes, effective and responsive delivery structures, engaged communities and having the appropriate skills and knowledge in place.

We will also embrace the Governments New Approach to Fighting Crime and work closely with our community safety partners to continue to reduce crime. May I assure you of my personal commitment to making West Lancashire the safest place to live, work and visit and on behalf of my partnership colleagues may I commend this plan to you.

A handwritten signature in black ink, appearing to read 'David Tilleray', with a large, sweeping flourish underneath.

David Tilleray
Chairman, West Lancashire Community Safety Partnership

Contents

Foreword 2

Vision 4

Background 5

Introduction 7

Community Safety Priorities 11

Frame Work for Delivery 16

Community Safety Delivery Plan 17

We can provide this information on request on audiotape, in large print, in Braille and in other languages.
Contact the PR Unit on 01695 585011.

Vision

The central vision of the West Lancashire Community Safety Partnership (CSP) is: -

- **To continue to ensure that West Lancashire remains one of the safest boroughs in the country to live, work and visit.**

We will achieve this aim with a continued focus on tackling Anti-Social Behaviour and other key crime and disorder concerns that have been identified within the Strategic Assessment and by ensuring that community safety issues continue to be a priority for all our partners.

West Lancashire CSP have embraced and will deliver through the Partnership Plan the vision set out by the Home Office in March 2011 in the Coalition Governments document entitled '[A New Approach To Fighting Crime](#)'. The key message from the Home Office is for 'local professionals to focus on local priorities and work with the police to cut crime'.

HALLMARKS

The previous Government as part of the Community Safety Partnership reform programme developed the 'Hallmarks of Effective Partnership'. These statutory requirements represent the key aspects of partnership working that underpin effective delivery through partnerships. Partnerships can use them to check their own effectiveness and to identify areas for improvement. The Community Safety Partnership will continue to use these hallmarks to ensure it is on track, identify areas for development and use them as a guide for improved partnership working:

- Empowerment and Effective Leadership
- Visible and Constructive Accountability
- Intelligence-Led Business Process
- Effective and Responsive Delivery Structures
- Engaged Communities
- Appropriate Skills and Knowledge

Each hallmark comprises of two elements, which are:

- New statutory elements for partnership working
- Suggested practice to achieve increased effective partnership, using the statutory requirements as a foundation

Background

The West Lancashire Community Safety Partnership (CSP) formerly known as the Crime and Disorder Reduction Partnership (CDRP) was established in response to the Crime and Disorder Act 1998.

The Crime and Disorder Act required Local Authorities and the police, together with other key agencies and the community, to work together at borough level to develop and implement strategies for reducing crime and disorder in the area. In 2006, the Police and Justice Act made several amendments to the Crime and Disorder Act including the requirement for Responsible Authorities to convene a County Strategy Group in two-tier areas. In Lancashire this is currently being fulfilled by the Safer Lancashire Board.

The West Lancashire Community Safety Partnership is one of six thematic groups within the West Lancashire Local Strategic Partnership. Within the Community Safety Partnership there are 6 responsible authorities that have specific duties to deliver community safety.

- West Lancashire Borough Council / Lancashire County Council
- Lancashire Constabulary
- Lancashire Police Authority
- Lancashire Fire and Rescue Service
- NHS Central Lancashire
- Lancashire Probation Trust

The Police and Justice Act 2006 made a number of key amendments to the Crime and Disorder Act to allow recommendations from a review of the act in 2004-05 to be implemented. This included a new duty on CSP's to produce an Annual Strategic Assessment and to prepare and implement an annual Partnership Plan.

CSP's are required to convene a strategy group made up of responsible authorities and the West Lancashire Strategic Review Group fulfills this role in West Lancashire. This group has to date fulfilled its responsibilities in respect of the production of the Strategic Assessment and Partnership Plan.

The main focus of the Partnership is to seek balanced solutions to our local issues and provide short, medium and long-term action plans to successfully engage our communities in securing sustainable solutions to these issues. The West Lancashire Community Safety Partnership Plan 2008-2011 provided a framework for delivery and our agreed delivery plan successfully contributed to significant reductions in crime across a range of key national indicators.

The Policing and Crime Act 2009, which came into effect from The 1st April 2010, also placed a new duty on Community Safety Partnerships to implement a strategy to reduce reoffending by adult and young offenders and for Probation to become a statutory authority. These new CSP duties have been adopted by West Lancashire CSP and within Southern Division, which includes West Lancashire, Chorley and South Ribble we have set up an Integrated Offender Management Board to oversee delivery of this requirement.

The CSP has built on what was already a very productive relationship with Lancashire Probation Service and is committed to the implementation and delivery of Integrated Offender Management which aims to: -

- Reduce crime, reduce reoffending, improve public confidence in the criminal justice system, tackle social exclusion of both offenders and their families, and drive organisational performance delivery improvement – all of which are inter connected.
- Address overlaps, and identify gaps in existing approaches and remedy that situation.

- Align the work of partners more effectively, by expanding or improving on established partnerships, to include wider social agencies, able to work with targeted offenders.
- Ratify a simple but strong governance structure with clarity around roles and responsibilities. This should also include leadership, operational decision-making and the allocation of resources.

A NEW APPROACH TO FIGHTING CRIME

In March 2011 the Home Office published a document entitled '[A New Approach To Fighting Crime](#)' which sets out the Coalition Government's new approach to crime and disorder. It focuses on removing bureaucracy, national targets and the Policing Pledge and replacing them with what the Home Secretary describes as one simple mission: **to cut crime**.

The success of this approach will be measured on whether crime has fallen and outlined below are the key points from the government's new approach to tackling crime:

1. The police now have only one objective: to cut crime. The extent of what we want community safety partnerships to do is similar – solve problems, work together, cut crime.
 - We will not tell CSPs how to operate or manage their performance – we are scrapping the old reporting arrangements and targets (such as public service agreements and local area agreements), stripping away unnecessary prescription and simplifying funding
 - CSPs should be action-orientated and should look to communities, not to Whitehall, for advice on what crime issues to prioritise
2. We will give the police and their partners far greater freedom to do their jobs and use their discretion - we will cut bureaucracy and give them greater discretion to use restorative justice responses.
 - We will ensure professionals have the tools and support they need to deal with antisocial behaviour, youth crime and violence
 - We will give local authorities more powers to deal with alcohol-related crime (for example, through refusing and revoking licenses) and we will promote local recovery systems to reduce drug-related offending
3. We will give the public more power to hold the police and community safety partnerships to account and feel empowered to reclaim their communities. From May 2012, the public will elect police and crime commissioners making the police accountable to the communities they serve.
 - New street-level crime and antisocial behaviour maps give the public up-to-date, accurate information on what is happening on their streets so they can challenge the police at mandatory beat meetings
 - We will encourage the public to participate in Neighbourhood Watch schemes and volunteer as special constables, magistrates and victim support volunteers.
4. We will establish the National Crime Agency - a powerful body of crime fighters led by a senior chief constable. The agency will:
 - Strengthen the operational response to serious and organised crime and better secure our borders
 - Consist of an number of operational commands (including a new border policing command) and will harness synergies between them to get the best outcomes

Introduction

Following the production of the Strategic Assessment, members of the Community Safety Partnership have devised, developed and together will deliver the refreshed annual Partnership Plan for 2011 - 2012 for West Lancashire. The Partnership Plan highlights the local strategic priorities for tackling Community Safety. It was formulated from a combination of approaches and information sources:

- Findings from the annual Strategic Assessment
- Consultation with community safety partnership agencies / organisations
- Home Office Guidance – ‘A New Approach to Fighting Crime’.
- Public consultation exercises and contributions from Community Organisations.

The refreshed version of the plan has been developed with reference to the Coalition Governments new approach to fighting crime which includes a radical shift in power from Whitehall to local communities This will involve the Police and community safety partners having more freedom to do their jobs and use their discretion.

West Lancashire Community Safety Partnership welcomes this approach and is well equipped for the challenge having a proven track record of local partnership working arrangements supported by a robust thematic group approach to tackle a range of crime and disorder issues. With the removal of national indicators the public will judge the success of partnership working on whether crime has fallen. To achieve this new approach the coalition have devised a number of key objectives, which will be both driven nationally and locally: -

- Local Accountability
- Increased Transparency
- Engaged and Active Communities
- Local, Professional Discretion
- Improving Efficiency In The Police
- Prevention As Well As Cure
- Criminal Justice System Reform
- A New Focus on Serious and Organised Crime.

Further details of this new approach are contained in the Home Office document entitled '[A New Approach To Fighting Crime](#)'.

The document recognises that cutting crime is best achieved in partnership and highlights the vital role that Local Councils, health services, probation and fire and rescue services play. To assist in this new approach the Government will seek to remove reporting burdens, unnecessary rules and provide community safety partners with more discretion to allow professionals to focus on local priorities and work with the police to cut crime.

The role of the Voluntary, Community and Faith Sector (VCFS)

The VCFS has a clear role to play in ensuring ‘Engaged and Active’ communities to support the work of the Community Safety Partnership. The VCF sector represents a partnership of organisations whose resources are vital in dealing with; the perception of crime and community cohesion as well as the practical support of both the victims of crime and offenders who can be encouraged to engage with ‘reducing re-offending’ projects. Essential contributions will be; the adoption of the CSP plan as a ‘core’ document for the VCF sector, the cascading of the plan within the West Lancs. communities and engagement with public sector partners in the development, facilitation and delivery of projects to achieve the plan objectives.

REDUCING REOFFENDING

The 'New Approach To Fighting Crime' paper highlights the role of CSP's in making sure that offenders are properly targeted and that victims are supported effectively.

Integrated Offender Management (IOM) is an approach to doing work with the offenders causing most concern to our communities. It builds on and expands current offender-focused programmes, such as National Offender Management Service (NOMS) work with statutory offenders, local Prolific and Priority Offender schemes, Multi-Agency Public Protection Arrangements and the Drug Interventions Programme. IOM manages a selected and locally defined cohort of offenders who are in the community, regardless of whether they are under statutory supervision or not. In targeting those who are of most concern, IOM aims to manage them consistently, using pooled local resources to turn them away from crime, punishing or providing opportunities for reforming them as appropriate.

West Lancashire CSP has worked collaboratively with Probation and the Youth Offending Team to meet the previous Local Area Agreement Priority objective of reducing the offending rate of prolific and priority offenders (NI 30). In the absence of this target will continue to work towards achieving reductions in reoffending through the local Prolific and Priority Offending Management Group and through its engagement and support of the Divisional Integrated Offender Management Board (IOM) and implementation of a Reducing Reoffending Divisional Strategy aimed at:

- Reducing re-offending, and through this reduce harm to victims, communities and vulnerable groups
- Contribute to an over all reduction in the level of crime committed
- Deliver a co-coordinated and integrated response to the resettlement of offenders

BREAKING THE CYCLE

The Ministry of Justice Structural Reform Plan published in July 2010 set out a commitment to introduce a 'rehabilitation revolution' and conduct a review of sentencing policy. The Ministry of Justice Green Paper, [Breaking the Cycle](#), represents a fundamental shift towards ensuring that offenders pay back to victims and communities for the harm they have caused; placing more emphasis on effective rehabilitation of offenders to stop them reoffending. The consultation exercise closed on the 4th March 2011. The four principles for achieving the proposed reforms set out in the Green Paper are:

- Protecting the public;
- Punishing and rehabilitating offenders;
- Transparency and accountability; and
- Decentralisation.

The Ministry of Justice Green Paper, Breaking the Cycle can be viewed by clicking on the following link: [Breaking the Cycle](#) (PDF 0.59mb 96 pages)

COMMUNITY SAFETY & LOCAL ACCOUNTABILITY

The 'New Approach To Fighting Crime' highlights the role of CSP's in ensuring local public spaces are safe, and that local operational partners on the ground are working together with neighbourhood policing teams and with CSP's, empowering front line staff to address problems and issues quickly and effectively.

West Lancashire CSP operates a robust thematic structured approach (page15) to ensure we meet these desired outcomes. We have seen significant reductions in crime over the past 3 years with this approach. We will continue to operate a partnership focused intelligence led approach to reducing crime and disorder and ensuring we achieve our vision of West Lancashire remaining a safe borough to live, work and visit. Our approach to fighting crime and achieving these objectives set by the Coalition Government is contained within the CSP Action Plan (page 16).

The 'New Approach to Fighting Crime' sets out the Coalition Governments vision of introducing a new approach to local accountability. Central to this approach to fighting crime is police reform and central to that reform is the replacement of bureaucratic accountability with local, democratic accountability. The reform will involve the introduction of democratically elected Police and Crime Commissioners. From May 2012, Police and Crime Commissioners will have real powers to make a difference, setting force budgets from 2013/14 and the police and crime plan, holding Chief Constables to account and be able to appoint and dismiss them. This approach is fully explored in the government consultation document entitled 'Policing in the 21st Century: reconnecting police and the people. The Police Reform and Social Responsibility Bill has now started its passage through Parliament, following its introduction to the House of Commons on 30 November 2010 and can also view the [latest version of the bill in PDF format on the Parliament website \(new window\)](#).

ANTI-SOCIAL BEHAVIOUR

The Community Safety Partnership has developed a set of locally agreed minimum standards for ASB and has adopted the anti-social behaviour pledge, which was developed through the Safer Lancashire Board. The CSP will also continue to work to its agreed set of minimum standards for tackling anti-social behaviour which includes: -

- Reducing perceptions of ASB year on year
- Taking reported cases of ASB seriously
- Providing regular information to residents on action taken
- Offering practical support and help to victims
- Ensuring an effective link between neighbourhood policing and neighbourhood management
- Providing residents with a right to complain to CSP chairs where effective action has not been taken

This work has been supported and strengthened by Lancashire Constabulary who have produced a comprehensive set of anti-social behaviour minimum standards. The standards consist of six key strands and addressing vulnerability is a key factor and feature within these standards. West Lancashire Community Safety Partnership supports the view of the Constabulary in recognising the importance of having a shared understanding of what constitutes vulnerability. The comprehensive set of minimum ASB standards, which cover six key strands: -

- Initial Call Handling
- Initial Response
- Initial Action
- Crime Focus Bureau Responsibilities
- Professional Assessment and Referral
- Case Management and Problem Solving

Strand 5 of the minimum standards entitled 'Professional Assessment and Referral,' is intended to provide a threshold or 'trigger point' to enable a prioritised multi agency response to victims of ASB who are considered vulnerable. In West Lancashire the police, with support of Partner agencies, have established an Anti Social Behaviour Risk Assessment Conference (ASBRAC). The function of the ASBRAC is to facilitate, monitor and evaluate effective information sharing and appropriate actions. The ASBRAC will support delivery of this strand and the meetings in West Lancashire work towards achieving the aims of ASBRAC: -

- To share information leading to identifying and taking action against the perpetrators of ASB
- To agree and implement a case management plan that provides professional support to those at risk and that reduces the risk of harm and disruption to victims lives
- To improve agency accountability and improve support for staff involved in dealing with cases

ANTI-SOCIAL BEHAVIOUR CONSULTATION

In July 2010 the Home Secretary announced a review of the many new tools and powers introduced since 1998 for dealing with anti-social behaviour. This consultation document entitled 'More Effective Responses to Anti-Social Behaviour,' outlines the findings of that review, and puts forward some proposals for radically simplifying and improving the toolkit.

The proposals include:

- repealing the ASBO and other court orders and replacing them with two new tools that bring together restrictions on future behaviour and support to address underlying problems
- ensuring there are powerful incentives on perpetrators to stop behaving anti-socially
- bringing together many of the existing tools for dealing with place-specific anti-social behaviour
- bringing together existing police dispersal powers for anti-social behaviour into a single police power
- making the informal and out-of-court tools for dealing with anti-social behaviour more rehabilitative and restorative
- Introducing a Community Trigger that gives victims and communities the right to require agencies to deal with persistent anti-social behaviour.

The closing date for the consultation is the 3rd May 2011 and to read the document in full click on the link entitled: [More effective responses to anti-social behaviour - PDF version of the consultation \(PDF file - 374kb\)](#)

SAFER LANCASHIRE BOARD PRIORITIES AND PRINCIPLES

The Safer Lancashire Board has agreed the areas of work to be delivered through the Community Safety Agreement for 2011-12. Lead officers for each area have been identified for all but one area and provide the expertise to determine how the outcomes will be best achieved.

- Protect and Support Vulnerable People (ACC Andrew Cooke)
- Change Attitudes and Behaviours (To Be Confirmed)
- Reduce Re-offending (Asst Chief Executive – Probation, Andrea Bennett)
- Reduce Alcohol and Drug Misuse (Director of Public Health, Dr Frank Atherton)

These areas have been informed by the district strategic assessments as well as individual organisational plans to determine where the Board can add value to existing delivery. The board's principles upon which the funding should be allocated are as follows:

- address performance which places overall county achievement at risk;
- minimise future risks to delivery;
- fill identified gaps in service across the county;
- support cross-district working
- support innovation and development of good practice.

West Lancashire CSP has developed a funding plan to support local delivery that recognises the board's principles for allocating resources. The funding plan aims to support the work of the CSP's thematic groups and build upon the successful performance in 2010/11.

Community Safety Priorities

The aim of the Strategic Assessment is to provide the West Lancashire CSP with a detailed summary of key issues and priorities for West Lancashire for the next 12 to 18 months along with details of any emerging issues, which may become problematic. The assessment has informed the production of the West Lancashire Community Safety Partnership Plan 2011/12 and the assessment has provided the evidence and justification for strategic decision-making, particularly in respect of identifying community priorities and the allocation of partnership resources.

The Strategic Assessment is broken down into CSP Priorities sections that reflect different areas of business and response:

PRIORITY	DESCRIPTION
CROSS CUTTING THEMES	
<p>Drugs Misuse</p>	<p>Drug use and its related criminality are considered to be a Borough wide problem in West Lancashire. Through arrests and intelligence it is known that a large quantity of the drugs dealt within Southern Division are supplied from outside the divisional boundary with Greater Manchester and Merseyside being the top locations for offenders linked to the supply of Class A drugs.</p> <p>West Lancashire has the second highest rate of drugs related hospital admissions in Central Lancashire with admissions more common amongst males however referrals into treatment are much lower than in other areas. This may suggest that more assertive Tier 2 treatment is needed to address the issues of drugs misuse. Overall numbers in treatment have remained stable in Central Lancashire however recent data from Lancashire's substance misuse services show that the number of young people presenting to services with Mephedrone substance misuse issues has increased over the last year.</p> <p>Substance misuse is common amongst groups of vulnerable young people such as looked after children, young offenders, children of substance misusing parents and young people who are homeless or sexually exploited. Unplanned pregnancy, especially among teenagers, and sexually transmitted infections also has strong links to substance misuse.</p> <p>Additionally, links can be made between the organised crime group aspect of drugs supply and violence and acquisitive crime, which occurs following disputes between different groups operating within the Borough.</p> <p>Residents in West Lancashire often express concern through PACT meetings about young people hanging around, openly taking drugs, usually cannabis</p>
<p>Alcohol Misuse</p>	<p>It is widely accepted that there are strong links between alcohol consumption and crime, particularly that of a violent nature and anti social behaviour.</p> <p>Alcohol related violence is linked to both the night time economy and domestic violence within the home but, based on recorded data, is showing a fairly stable trend. Home drinking is particularly concerning as it is unsupervised and there are no controls regarding who by or in what amount alcohol is consumed. Home drinking has increased by 18% in England over the period 1997 to 2007.</p> <p>Whilst few community concerns are expressed about the health side of alcohol related harm, many residents of West Lancashire are concerned about street drinking and alcohol related anti social behaviour, which are often established as PACT priorities. Perceptions of alcohol misuse has also been shown to impact on feelings of safety -</p>

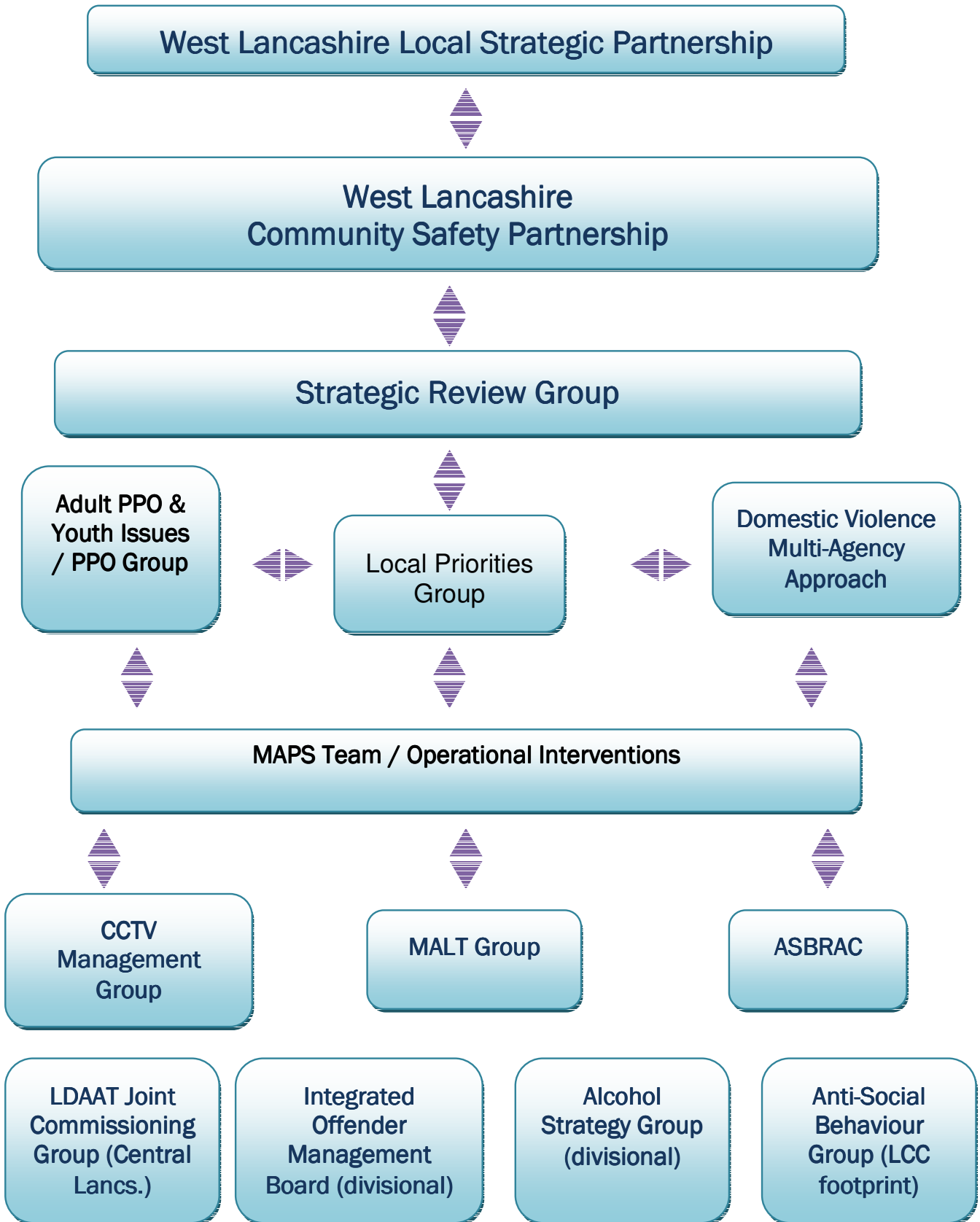
	<p>analysis of a recent Lancashire Loop survey showed that respondents in Southern Division are least likely to feel safe around pubs in their neighbourhoods due to threatening, drunken behaviour and the awareness of excessive drinking leading to anti social behaviour.</p>
Reoffending	<p>It is widely accepted both locally and nationally that a small percentage of offenders are responsible for a large proportion of crime. It is also estimated that individuals who have already been through the justice system commit around half of all crime. As part of a national reform of the criminal justice system, there is going to be a stronger focus on the rehabilitation of offenders and the interventions needed to reduce reoffending.</p> <p>If individuals are to change their offending behaviour then many agencies have a part to play in understanding and addressing the underlying issues which result in reoffending. 'Attitudes, Thinking and Behaviour' is identified as a need related to increased risk of reoffending for 92% of offenders in West Lancashire. Other common reoffending risk factors include 'Alcohol Misuse' (57%) and 'Children, Families and Relationships' (55%).</p> <p>Whilst the reform of the criminal justice system is still ongoing, it is clear that a joint approach to offender management and effective information sharing will be crucial in the future.</p>
Cross Border Offenders & Organised Crime	<p>West Lancashire shares its border with Merseyside and Greater Manchester creating an obvious threat from offenders who use the motorway and major road network to travel from these areas to commit crime in West Lancashire.</p> <p>The main threat from travelling offenders continues to be in relation to domestic burglary however offenders from outside the CSP border have also been found to commit vehicle crime, violent offences and supply Class A and B drugs. Whilst a fairly stable trend is evident in relation to domestic burglary offences in West Lancashire, cross border offending continues to be an issue and a large amount of partnership resources are dedicated to the problem</p> <p>Whilst the public may not be aware of the extent of the criminality generated by Organised Crime Groups, the resulting issues such as drugs use, acquisitive crime and anti social behaviour are very important to the residents of West Lancashire.</p>
PROTECTING VULNERABLE PEOPLE	
Domestic Abuse	<p>Domestic abuse is considered to be a widespread problem in West Lancashire. Whilst reports of domestic incidents are more prevalent in the more deprived, densely populated areas, particularly the estates of Skelmersdale, research has suggested that domestic abuse is just as common in the rural areas. Domestic incidents most commonly occur within the home with alcohol a strong contributory factor.</p> <p>Recorded data indicates that levels of domestic violence in West Lancashire are slightly below average when compared to the rest of Lancashire however confidence in reporting and differences in recording practices affect the validity of these comparisons. West Lancashire along with Chorley and South Ribble have a slightly higher than average rate of repeat MARAC (Multi Agency Risk Assessment Conference) cases when compared to the rest of the County.</p> <p>Domestic incidents and crimes have shown sporadic increases in West Lancashire but have remained fairly stable over the long term. The number of high risk and medium risk domestic abuse cases has increased considerably across Southern Division and the County overall. This has been attributed to the inception of the DASH (Domestic Abuse, Stalking, and Harassment) risk assessment, which sees the officer grading a risk assessment at the time of input. Increases have also been seen in the number of repeat MARAC cases again in line with the rest of the County. The number of referrals to the IDVA (Independent Domestic Violence Advisor) service in West Lancashire has remained fairly stable over the long term however the percentage of re referrals to the service has fluctuated during 2009/10. The percentage of referrals to the IDVA service</p>

	that are considered to be high risk or very high risk has increased during 2009/10.
Child Sexual Exploitation	<p>Child Sexual Exploitation is an ongoing issue within Southern Division. Offenders continue to target young females using bribe techniques such as alcohol or drugs to attempt to invoke sexual activity. Victims are often already vulnerable for example residing in care homes or frequently missing from home.</p> <p>Many young people who have been exploited do not believe they have, believing they have entered into relationships and sexual activity by choice. This creates obvious difficulties in identifying victims who may not come forward as such.</p> <p>Since the introduction of Operation Cherish (Southern Division's response to CSE) the number of referrals to the Police through partner and Police activity has fluctuated. Multi agency interventions and action taken through the Public Protection Unit (PPU) have resulted in some notable successes and lengthy prison sentences in relation to CSE.</p>
Anti-Social Behaviour & Signal Crime	<p>Anti social behaviour in its many forms and visible issues or 'signal crimes' such as criminal damage, environmental crime and deliberate fire setting are the most problematic issues to the public. These issues are of high concern to the community as they have an impact on the appearance and perception of an area and impact upon residents' quality of life.</p> <p>Reports of anti social behaviour, particularly young people hanging around and neighbour disputes, and signal crimes are very common in West Lancashire and amount to a large proportion of calls taken by the Police and other agencies. Whilst incidents are most concentrated in the central, more densely populated areas and different issues can affect different areas, anti social behaviour and signal crimes are considered to be a Borough wide problem in West Lancashire. Motorbike nuisance has been a significant problem in the estates of Skelmersdale, however the introduction of a task and time group dedicated to the issue has contributed to a reduction in reports and increased satisfaction amongst residents.</p> <p>Repeat callers have a noticeable impact on anti social behaviour figures recorded by the Police and partners. Many of these repeat callers have been identified as 'vulnerable ASB victims', to who there has recently been increased attention. The County wide ASB minimum standards have been adopted by the Police and partners to minimise the impact ASB has on those who are vulnerable or subject to repeat ASB. Anti Social Behaviour Risk Assessment Conferences (ASBRACS) have also recently been adopted to address the issue of vulnerable ASB victims.</p>
EMERGING PRIORITIES	
Road Safety (Casualty Reduction)	<p>Road traffic collisions are considered to be a Borough wide issue in West Lancashire with incidents more concentrated in some of the more rural wards with higher speed limit roads (e.g. Bickerstaffe, Derby, Knowsley). Road injuries and deaths are significantly worse than the regional and national average in West Lancashire.</p> <p>Levels of death and serious injury collisions have been fairly stable over the long term but fluctuate considerably from one month to the next. Levels of road traffic collisions involving children are below the County average however the killed or seriously injury rates for casualties aged 16 – 19 and 20 – 25 years old are higher than expected.</p> <p>The rural make up and higher speed limit roads of West Lancashire create an increased threat of collisions occurring. Collisions with excessive speed as a contributory factor are over 4.5 times as likely as those without to result in a fatality</p> <p>Road safety is a clear community concern in West Lancashire with speeding in particular regularly raised as a PACT priority by residents across the Borough. (SOURCE: Sleuth PACT Summary accessed November 2010).</p> <p>Road Safety is also a priority for Lancashire, particularly children and young people.</p>

	<p>Good progress has been made in recent years to reduce road casualties across the county but no room for complacency, and as there is still a significant challenge in West Lancashire. Children and young people aged up to 25 years represent 36% of all the casualties in West Lancashire, with the 16 to 25 year age group representing 27% overall</p> <p>Between 0-15 years of age the casualty rates are lower than the Lancashire average, However, the proportion of children injured whilst a car passenger is higher than expected. For young people aged between 16 – 25 inclusive the picture changes. For young people aged 16 to 25 the 'Killed and Seriously Injured' casualty rate is greater than the Lancashire average. There is also a concern regarding casualty rates for riders of powered two wheelers aged 16-19</p>
<p>Metal Theft</p>	<p>With metal prices on the rise again, there has been an increasing occurrence of metal thefts in Southern Division. It is evident that a steady increase in offences has been taking place since May 2010 which is when the price of lead and copper began to increase following a decline.</p> <p>Metal thefts predominately take place at schools and churches which have lead flashing on the roofs however offences have also been known to occur at the scrap yards themselves, at refuse sites, on building sites and in residential areas (usually from garages / sheds or theft of scrap stored in gardens). Offenders have been found to be both local and travelling from neighbouring divisions and further a field.</p>
<p>Fire Safety</p>	<p>Deliberate fire setting occurs across the Borough although incidents are heavily concentrated in the Skelmersdale area. In addition to the established trends an emerging threat has evolved through the introduction of wheelie bins and the related issue of secure storage.</p> <p>The design of the estates in the Skelmersdale area presents a significant problem due to the layout of the properties and positioning of the now redundant bin cupboards. Wheelie bins are being stored at the front of properties adjacent to the bin cupboards creating a potential risk that is accentuated due to the over door canopies and extending front bedrooms that feature in many houses on the Tanhouse, Moorside & Digmoor areas of Skelmersdale.</p> <p>In April 2010, 9000 bins were rolled out across the three estates and in that period LFRS have attended 22 incidents involving wheelie bins on the Tanhouse, Moorside and Digmoor estates. A further 13 incidents have occurred within the Skelmersdale area, of the total number, 6 incidents have involved property (due to spread from initial item ignited) with 3 incidents requiring persons to be rescued.</p> <p>Arson is emerging as a preferred harm method in both the neighbouring authority area of Merseyside and the West Lancashire Borough, as the crime is difficult to prevent and detect prior to and after the event. (Arson Threat Home Fire Safety Checks are carried out by LFRS on receipt of intelligence received.)</p>
<p>Illegal Money Lending</p>	<p>Areas of West Lancashire have been identified as being at risk to loan sharks with areas of social and financial exclusion particularly susceptible.</p> <p>West Lancashire's geographical position also makes it convenient for cross boarder loan sharks based in the Merseyside or Greater Manchester areas.</p> <p>Illegal money lending has ties to other areas of criminality such as knife/gun crime, counterfeiting, prostitution etc</p> <p>Loans issued by loan sharks are by definition illegal therefore enforcement of the debt involves physical, mental or sexual intimidation and violence as well as damage to property.</p> <p>As a result victims will resort to crimes such as theft in order to pay off their debt.</p>

	<p>Female victims could be coerced into 'paying in kind' in order to service the debt whilst male victims may end up 'working' for the loan shark in other areas of criminality.</p> <p>Given the associated intimidation levels victims are reluctant to provide information and are more likely to suffer in silence. This is compounded by a lack of legal/financial knowledge on the part of victims which is reinforced by the loan shark themselves.</p> <p>Illegal money lending is largely unreported within West Lancashire. 'Operation Credit' is a multi-agency operation looking at tackling the difficulties in infiltrating illegal money lending as well as providing assistance to victims and potential victims.</p>
<p>University and Impact on Town Centre</p>	<p>Edge Hill University in Ormskirk has seen increasing numbers of students residing in the town and its environs. There are currently in excess of 1100 students residing on campus and between 2000 and 3000 students residing in the town in predominately privately rented multi occupancy accommodation.</p> <p>The rising numbers of students creates various issues including a clash of lifestyles with the established residential community, noise, anti social behaviour and parking. However, only a very small proportion of Edge Hill students are involved as perpetrators of these issues and another important aspect to consider is the safety of students living on and off campus. Many resident students are living away from home for the first time and rising numbers creates an increased need to educate about fire safety, personal safety at night and protecting their property.</p> <p>The Police and partners make a significant commitment in helping to manage this issue, particularly around key events such as Fresher's Week. Continued liaison and joint working with Edge Hill University is vital to ensure that the increasing student population does not result in an increase in crime and ASB involving students both as victims and offenders.</p> <p>Contrary to some expectations, the night time economy in Ormskirk is expanding. There is already an evident increase in the number of requests for later opening of licensed premises and the continued growth of Edge Hill University may attract more businesses to the area.</p>

WLCSP Framework for Delivery



West Lancashire Community Safety Partnership Plan 2011/2012



Objective 1: Reduce Re-offending					
Target & Base Line	March 2012	Owner	Actions	Lead Officer	Funding
<p>Reduction in offending rate of prolific and priority offenders</p> <p>Baseline (TBC) The Home Office are currently in the process of drafting a note outlining the next steps for measuring PPO performance.</p> <p>To be confirmed</p>	<p>The Home Office are currently in the process of drafting a note outlining the next steps for measuring PPO performance. The reoffending of PPOs will relate to those listed on JTRACK who have been identified through a conviction in a rolling identification window. District data will be provided regularly via iQuanta.</p>	Lancashire Probation Service	<p>Hold monthly Adult and Prevent and Deter Group meetings to ensure effective case management of identified PPO's in West Lancashire</p> <p>To maintain a caseload of approximately 25 identified PPO's in West Lancashire</p> <p>To ensure alignment of the West Lancashire PPO scheme with DIP and OMU.</p> <p>To support the Integrated Offender Management (IOM) Board and the development of the Reducing Reoffending Strategy for West Lancashire, Chorley and South Ribble.</p> <p>To continue to build on the progress made since the introduction of the West Lancashire Prolific and Priority Offender Scheme and achieve the aims of IOM: -</p> <ul style="list-style-type: none"> • Reduce re-offending, and through this reduce harm to victims, communities and vulnerable groups • Contribute to an over all reduction in the level of crime committed • Deliver a co-ordinated and integrated response to the resettlement of offenders 	Mike Lock / Dorothy Shields	Existing Budgets
Reduction in the rate of proven re-offending by young offenders	Local target to be agreed with YOT	YOT	Hold monthly Prevent and Deter Group meetings to ensure effective case management of identified young offenders in the borough and support the management of	Teresa Fox / Grant Murdoch	Existing budgets

Baseline ? To be confirmed / agreed			issues around the vulnerable young families agenda. Provide targeted youth support through joint working arrangements with Young People's Service offering access to positive diversionary activities and information, advice and guidance		
Reduce adult re-offending rates for those under probation supervision Baseline? To be confirmed / agreed	Local target to be agreed with probation	Probation	Ensure effective multi-agency management of known offenders within the borough. Complete the South Lancashire Reducing Reoffending Strategy and implement an action plan around improving offender access to the 7 reducing reoffending pathways Implement integrated offender management for both high risk of harm, DV perpetrators and serious acquisitive crime offenders (with a focus on Revolution cohort for serious acquisitive crime and criminal anti social behaviour)	Mike Lock / Dorothy Shields	Existing budgets
Agree Alcohol treatment requirements target for March 2012 Agree DRR target for March 2012				Mike Lock / Dorothy Shields	Existing budgets
First time entrants into the Youth Justice System aged 10-17 Baseline	March 2012 Target to be agreed with LYOT		Reduce the risk of young people becoming offenders by: <ul style="list-style-type: none"> Identifying them at an early stage through the Prevent and Deter Group and Targeted Youth Support Operational Group and through working closely with schools on identifying at risk young people 	Teresa Fox / Grant Murdoch	Existing budgets
Objective 2: Reduce Drug & Alcohol Misuse					
Target & Base Line	March 2012	Owner	Actions	Lead Officer	Funding

<p>Improve the number of planned discharges for clients 18+ who have undergone effective treatment to 60%</p>	<p>60% (this will show the effectiveness of services – see attached for a full definition of the target)</p>	<p>LDAAT</p>	<p>Work in partnership with the LDAAT through the Joint Commissioning Group to ensure locally commissioned services are effective in meeting local need.</p> <p>Develop more robust substance misuse tier 2 services for adults</p> <p>Increase percentage of drug and alcohol users retained in effective treatment for 12 weeks or until discharged.</p> <p>Support and develop the integration of substance misuse provider service Greater Manchester West in local partnership working structures within West Lancashire to support the aims of Integrated Offender Management.</p>	<p>Sam Jones</p> <p>Janet Tyrer, GMW</p>	<p>Existing Budgets</p>
<p>Reduce drug-related (Class A) offending rate</p> <p>Baseline To be discussed</p>	<p>Target to be agreed with the LDATT</p>	<p>LDAAT</p>	<p>Ensure effective management of substance misuse offenders through the alignment of PPO & DIP (Revolution)</p> <p>Proactively target known Class A drug users through the OMU and Revolution.</p>	<p>Sam Jones</p>	<p>Existing budgets</p>
<p>Delivery of key actions contained within the Central Lancashire Alcohol Action Plan</p>	<p>Deliver the agreed appropriate actions contained within the Central Lancashire Alcohol Action Plan</p>	<p>PCT / CSP</p>	<p>To deliver the agreed local actions contained within the Central Lancashire Alcohol Action 2011. The Central Lancashire Alcohol Action Plan will not document actions that are the core business of existing partnerships or agencies. It will document actions that require a partnership response to a specified alcohol related priority. The actions will be evidence based and SMART. Where actions require no additional resource they will be delivered by the group itself. Where they require funding they will be used to inform commissioning through local partnerships including Community Safety Partnerships.</p>	<p>Andrew Ascroft</p>	<p>Existing Budgets</p>
<p>Establish baseline of level of enquiries around drugs and</p>	<p>Target to be agreed</p>	<p>CSP Trading Standards</p>	<p>Provide information and advice to young people via "The line and other interactive services means, and through Information and Advice Centres for young people</p>	<p>Grant Murdoch</p>	

alcohol by young people in Lancashire Young People's Service Information services.		Police	including through Targeted Youth Support staff. Provide management information on the nature and extent of information enquiries at centres Raise awareness of the Young People's Service website offering information and advice on health and substances and on positive lifestyles and actively promote the availability of positive activities through the Go4it website area.		
Address underage alcohol sales and Proxy sales Reduce the underage sale of alcohol. Baseline to be established Trading Standards test purchase data 2010 to 2011- 92% retail compliance for test purchase visits.	100% retest purchasing pass rate for on and off licensed premises that have failed a test purchase. (Retest to be done no longer than 2 months form first failure).	MALT	Continue to promote the consequences campaign aimed at Parents to address illicit supply of alcohol to underage children. Through the Multi-Agency Licensing and Tasking Group (MALT) continue to target off-license premises with test purchasing exercises. At least 15-test purchase visits to be conducted intelligence led. May be increased dependant on complaints and intelligence received by the Police, Lancashire Trading Standards and MALT. Development of an updated Age Check Resource (retailer due diligence package) for distribution to on/off licensed premises as appropriate to support retailers in preventing underage sales incorporating key messages around proxy sales of alcohol.	Sgt Anthony Bushell David Johnnie	Existing budgets
Objective 3: Reduce Violent Crime & Alcohol Related Violent Crime					
Target & Base Line	March 2012	Owner	Actions	Lead Officer	Funding
Reduce Violent Crime. Target – downward trend / maintenance Baseline (TBC)	Downward trend / maintenance by March 2012	CSP	Continue to roll out and support Night Time Economy enforcement & awareness operations including: - <ul style="list-style-type: none"> • Operation Summer Nights • Operation Night Safe • Adherence to section 17 to design out crime in Town Centre / Night Time economy 	Andrew Hill / Geoff Hurst	Existing budgets

		Police / Trading Standards	<ul style="list-style-type: none"> • Tasking (MALT) meetings to identify and jointly target problem premises • Monitor and make interventions when repeat victims are identified • Robust approach to Policing Hotspot areas and the management of licensed premises. • Robust management of violent offenders through Integrated Offender Management approach • Employ CCTV to pro-actively monitor the Town Centre to tackle alcohol related violent crime. • Target young people and binge drinking using a social marketing approach to increase the awareness of risks related to alcohol consumption. • Promotion of brief interventions to address alcohol related crime • Continue the bespoke Edgehill University and Ormskirk Town Centre Multi Agency Tasking And Coordinating Group, (MATAC). • Continued operational support of the 'Street Pastors' scheme in Ormskirk • Provide multi-agency support for the implementation of 'Street Pastors' initiative in Skelmersdale. • 'Operation Credit' – multi-agency operation addressing illegal money lending and associated violent crime 		
--	--	----------------------------	---	--	--

Objective 4: Reduce Incidents of Domestic Violence

Target & Base Line	March 2012	Owner	Actions	Lead Officer	Funding
Increase the detection rate for Domestic Violence Offences Baseline: (TBC)	The target is to reach 70% detection rate by March 2012	Lancs. Domestic Violence Partnership / Police	<ul style="list-style-type: none"> • Reduce repeat incidents of domestic violence presentations to MARAC • Identification of and early intervention with perpetrators of DV. • Support the MARAC Process • Work with partner agencies to identify funding to support an IDVA post beyond March 2011 • Continue to support the West Lancashire 	Andrew Hill / Geoff Hurst	Existing budgets / Home Office

			<p>Domestic Violence Support Service</p> <ul style="list-style-type: none"> • Support young people involved in DA situations through referral to young people's information advice and support services including online support. • Develop media campaigns to focus on the summer and Christmas periods with the objective of raising awareness of alcohol related domestic violence and reducing incidences of violence. • Refresh the CSP Domestic Violence Strategy & support delivery of its key priorities. • Produce and promote West Lancashire Borough Council Domestic Violence policy and guidance. 		
<p>Increase the number of DV incidents recorded by the Police</p> <p>Baseline - to be established</p>	<p>Baseline to be established</p>	Police	Work towards the identified SMART objectives of the West Lancashire CSP Domestic Violence Strategy	Andrew Hill / Geoff Hurst	Existing budgets
<p>Objective 5: Reduce Cross Border Offending Including Serious Acquisitive Crime</p>					
Target & Base Line	March 2012	Owner	Actions	Lead Officer	Funding

<p>Serious Acquisitive Crime. Target – downward trend / maintenance</p> <p>Baseline (TBC for West Lancashire)</p>	<p>Downward trend / maintenance by March 2012</p>	<p>Lancs. Police / CSP</p>	<p>Identify current and potential future threats through the CSP analytical report produced for the Local Priorities Group and develop and agree a multi-agency approach to tackling issues.</p> <p>The continued use of a dedicated team of Police Officers to target Serious Acquisitive Crime with specific focus on Domestic Burglaries and Auto Crime.</p> <p>Activity under 'Operation Coalition' – Periodic West Lancashire Policing operation dedicated to reducing Serious Acquisitive Crime utilising resources from across the Constabulary with various tactics including cross border 'checkpoints' and initiatives within Neighbourhood Policing Areas.</p> <p>Liaison with The Integrated Offender Management Unit in order to identify and manage prolific and priority offenders in alignment with the West Lancashire Adult and Prevent and Deter Prolific and Priority Offender Groups.</p> <p>Increased collaboration with neighbouring CSP's to combat cross border criminals.</p>	<p>Geoff Hurst / Andrew Hill</p>	<p>Existing budgets</p>
<p>Heightened awareness of Cold Calling to protect vulnerable residents and support to victims</p>		<p>Police / Trading Standards</p> <p>Trading Standards</p> <p>Trading Standards</p> <p>Trading Standards</p> <p>Trading Standards</p>	<p>Activity under 'Operation Credit' – multi-agency operation addressing illegal money lending and associated criminality.</p> <p>Activity under 'Real Deal' – Code of Practice/Charter for markets addressing the sale and supply of illicit goods e.g. contraband, counterfeit, stolen.</p> <p>Activity following on from 'Scamnesty' – month long awareness and intelligence gathering exercise looking to address level 2/3 fraud</p> <p>Carry out Rapid Response and target hardening visits to vulnerable victims of cold calling, residents targeted by travelling offenders, often cross-border criminals</p> <p>Share intelligence with partner agencies (locally and nationally) including Early Warning cascading of</p>	<p>Geoff Hurst</p>	

		Trading Standards	information to neighbourhood agencies. Promotion and awareness of Help Direct Safe Trader Scheme, including participation at community events and recruitment of traders onto the Scheme		
Objective 6: Reduce Arson and Improve Fire Safety					
Target & Base Line	March 2012	Owner	Actions	Lead Officer	Funding
Reduce the number of accidental dwelling fires and associated casualties Reduce the number of deliberate fires (working in partnership with Lancashire Constabulary to introduce a target of 20% for the detection rate of arson related incidents)	Accidental Dwelling Fires target 68 (local KPI for reducing cooking fires) Accidental Building Fires target 30 Deliberate Primary Fires target 66 (including local detection rate) Deliberate Secondary Fires target 363	Lancs. Fire and Rescue Service	Develop a multi agency approach to increasing the number of home fire safety check undertaken with vulnerable people with and an emphasis on those that live alone Work with residents and communities to reduce incidents of primary fires through pro-active marketing of good practice and education tools To encourage the acceptance by partners to promote and refer householders through to LFRS for Home Fire Safety Checks. Deliver child fire safety education (CHILDSAFE) to all Year 2 and Year 6 classes in West Lancashire To actively engage with all partners to increase the number of Home Fire Safety Checks undertaken with older people LFRS Fire Safety Enforcement Department to promote	John Buck	Existing budgets

	<p>Casualties from Accidental Dwelling Fires reduction on 2010/11 figure of 10</p>	<p>through local business forums the requirement for businesses to comply with Fire Safety legislation</p> <p>Deliver specialised Home Fire Safety Checks for people or groups at risk from targeted attack using fire as a weapon</p> <p>To reassure the public that measures to ensure both firework safety and bonfire safety is in place and is working well.</p> <p>To further improve the quality of life for West Lancashire residents by working with partner agencies to reduce the number of fire and RTC related incidents in areas where ASB and other crime is high.</p> <p>A programme of visual audits with street scene and PCSO's</p> <p>Develop programme of work with young people to encourage support and involvement with emergency and rescue services (e.g. ATEC)</p> <p>Young People Interventions – Promote LFRS Young people intervention courses for young people identified as requiring support to raise aspirations or prevent re-offending</p> <p>Deliver several Youth Engagement Schemes (YES) aimed at 11-17 year old young people</p> <p>Deliver the FIRES Programme, which will implement an educational programme to children and young people who have developed a fascination with fire and who are exposing themselves and others to risk, or who have been found guilty of a fire related crime in which case the aim is to prevent re-offending.</p> <p>Work closely with partners to deliver the Brightspax Campaign in October and November each year - To combat criminal damage and anti-social behaviour related to fireworks and bonfires. To educate young people about firework and bonfire safety.</p> <p>To ensure that during the run-up to November 5th, on the night itself and in the week following, firework and bonfire</p>		
--	--	---	--	--

		Trading Standards	injuries and damage to property are reduced. Promote the safe storage and responsible retailing of fireworks during the October November period and work with partners to deliver Brightspax campaign		
		Trading Standards	Promote electrical safety with 2nd hand retailers of electrical goods and through the market, throughout the year.		
Objective 7: Reduce Road Safety Casualties					
Target & Base Line	March 2012	Owner	Actions	Lead Officer	Funding
<p>Reduce the number of people killed or seriously injured in road traffic accidents</p> <p>Baseline: - The base for West Lancs. to be inline with the LCC overall base would be the average from 2004 to 2008 which is</p> <p>For children 63 all (KSI and Slight) casualties per year and 11 KSI – Killed and seriously Injured</p> <p>For 16-25 is 180 all (KSI and Slight) casualties per year and 33 KSI – Killed and seriously Injured</p>	<p>For children all 53(KSI and Slight) casualties per year and 9 KSI – Killed and seriously Injured</p> <p>For 16-25 is 144 all (KSI and Slight) casualties per year and 26 KSI – Killed and seriously Injured</p> <p>These are based on 65% reduction in 2020 from the 2004-08 average baseline.</p>	Lancashire County Council / Police	<p>The Children and Young Peoples Action Plan for West Lancashire which is currently being developed will allow the Southern Division Road Strategy Group to work with Partners to meet local needs in West Lancashire. Further information on the Road Safety Group can be accessed by clicking on the link: - www.saferlancashire.co.uk</p> <p>We are proposing to address this challenge through the following approaches.</p> <ul style="list-style-type: none"> Finalise and agree the West Lancashire Road Safety Action Plan by July 2011 working with the Youth Service and other partners to look at ways of engaging with secondary school aged children working with collages in the area, to develop co-creation work by the students developing and delivering their own road safety themed theatre in education production. working with the Constabulary and with Lancashire Fire & Rescue to look at targeted enforcement and engagement work to change attitudes and behaviour of 16 to 25 year olds, during 2011/12 we will be targeting junior & primary schools in West Lancashire that are in the areas where the most accident occur to ensure they deliver 	Paul Binks / Geoff Hurst	Existing budgets

			<p>the curriculum based and practical Road Safety packages</p> <ul style="list-style-type: none"> Working with collages in the area to deliver 'Geared and Go' to young riders <p>Continue to work in partnership with the Lancashire Road Safety Partnership</p> <p>Continue to promote road safety campaigns including drink drive and speed campaigns.</p> <p>Utilise ANPR and speed enforcement techniques at hotspot locations</p> <p>Engage with communities to identify community concerns in respect of road policing issues.</p> <p>Through the multi-agency meeting process monitor RTC's with a view to identifying hotspot locations.</p> <p>Continue to act upon intelligence and target known offenders.</p> <p>Deliver Operation Pathway which in response to PACT requests. Action to focus on key profile groups that have a significant impact on road casualties, criminal use of the roads and anti-social behaviour, with a particular emphasis on the issue of drink/drug related driving incidents. The activity days will be intelligence led, conducted in a high profile manner and in line with the National Intelligence Model (NIM)</p>		
Reduce the number of people killed or seriously injured in road traffic accidents		Fire and Rescue Service	To work closely with Lancashire Partnership for Road Safety and Lancashire County Council to help deliver 'Wasted Lives' education programme to Year 11 (pre drivers) and 17 -25 year old young drivers.	John Buck	Existing budgets
Objective 8: Reduce Anti-Social Behaviour & Signal Crime					
Target & Base Line	March 2012	Owner	Actions	Lead Officer	Funding

<p>Reduce Police recorded ASB. Target - downward trend / maintenance</p> <p>Baseline to be established in 2011/12</p> <p>Reduce Police recorded criminal damage. Target - downward trend / maintenance</p> <p>Baseline (TBC)</p> <p>Increase the use of Restorative Justice approach.</p> <p>Baseline – To be established in 2011/12</p>	<p>Downward trend / maintenance by March 2012 against recorded ASB</p> <p>Downward trend / maintenance by March 2012 against recorded Criminal Damage.</p> <p>Target – 100 quality assured RJ's per month for Southern Division.</p> <p>Local CSP target (TBC)</p>	<p>CSP</p>	<p>Implementation of the revised ASB Strategy, ASB Pledge and Lancashire Constabulary's ASB Minimum Standards with specific focus on vulnerable victims and the use of Ant-Social Multi Agency Risk Assessment Conferences (ASBRAC).</p> <p>The partnership work involving police, WLBC, Mencap and the Service User Network is ongoing with the aim of protecting vulnerable people in the community (people with learning disabilities) is continuing this year.</p> <p>Specific initiatives include a range of activity during National Learning Disability week (20.6.11) and a safer town centre scheme in both Skelmersdale and Ormskirk. The work focuses upon protecting people with a learning disability from ASB and hate crime. Other agencies involved include PCT, Social Services, Help Direct and CPS</p> <p>Identify hot spot areas through: -</p> <ul style="list-style-type: none"> • MAPS Team Referrals • Local Priorities Group • Tactical analysis of statistics • Prevent and Deter Group • Targeted Youth Support Operational Group • Adult PPO Group Meeting <p>Monitor and target crime trends, putting in place timely and appropriate interventions through the Multi Agency Problem Solving Team and Local Priorities Group.</p> <p>Address the anti-social behaviour of identified individuals through the following mechanisms</p> <ul style="list-style-type: none"> • Adult PPO Group • Prevent and Deter Group • Local Priorities Group (LPG) • Crime Focus Group • Warning letters 	<p>Andrew Hill / Geoff Hurst / Grant Murdoch / Teresa Fox</p>	<p>Existing budgets</p>
--	--	------------	---	---	-------------------------

			<ul style="list-style-type: none"> • ABC's • ASBO's, (or replacement - pg 10) • Tenancy enforcement • Dispersal Orders • Parenting Orders • PAYP and targeted youth support operational group • Information advice and guidance • Undertake targeted operations to address ASB such as Operation Trojan. • Utilise CCTV to identify and prosecute perpetrators of ASB and provide community reassurance. <p>Effective delivery of the ASB Pledge and agreed CSP minimum standards with the aim of:</p> <ul style="list-style-type: none"> • Reducing perceptions of ASB year on year • Taking reported cases of ASB seriously • Providing regular information to residents on action taken • Offering practical support and help to victims • Ensuring an effective link between neighbourhood policing and neighbourhood management • Providing residents with a right to complain to CSP chairs where effective action has not been taken <p>Continue to support cross cutting campaigns including Operation Summer Nights, Operation Shepherd and Bright Sparx.</p> <p>Reduce the impact of motorcycle nuisance through local deployment of police and CCTV. Promote safe and legal use of motorcycles through educational leaflets developed by the CCTV. Distribution to be aimed at young people, parents and traders when using/ selling/ buying motorbikes/ quad bikes and mini motos.</p>		
--	--	--	---	--	--

			<p>Monitor the effectiveness of Section 59 signage and motorcycle barriers and support through the CSP and in partnership with the CVS the installation of 6 new motorcycle barriers in Little Digmoor by August 2011</p> <p>Hold a Face the People Event / or develop alternative community engagement to ensure visibility and accountability to the community.</p> <p>Work in partnership with the Lancashire Probation Community Payback Team to identify projects within the Borough to support the rehabilitation of offenders and make environmental improvements.</p> <p>Deliver programmes of targeted youth support and positive activities with young people.</p> <p>Positive activities programme for young people developed and publicised widely via the go4it website and encourage all providers of activities for young people to promote the services they offer via Go4it</p> <p>Develop a Locality Wide Youth Strategy as part of the Children's Plan which seeks to promote young people's take up of positive activities.</p>		
Objective 9: Provide Positive Activities for Young People					
Target & Base Line	March 2012	Owner	Actions	Lead Officer	Funding
Young peoples participation in positive activities	March 2011	Lancs. Young People's Service	<p>Involve young people in decision-making processes and community consultation and provide a positive view of young people's involvement in communities through web based information displays and community events/forums</p> <p>Develop and promote the Go4it Website to ensure partners providing services to young people publicise activities in a coordinated way</p> <p>Increase the range of activities on offer to young people through PAYP funds and work with Local Children's Trust Partnership partners to deliver a programme across the</p>	Grant Murdoch	Existing budgets and SSCF

			<p>Locality</p> <p>Develop a Locality Wide Youth Strategy as part of the Children's Plan which seeks to promote young people's take up of positive activities in partnership with key stakeholders</p> <p>Develop a neighbourhood approach to the coordination and delivery of positive activities in key areas</p> <p>Publicise and promote the availability of services for young people including positive activities</p> <p>Encourage feedback from young people about existing services and gaps in services</p> <p>Provide information advice and guidance to enable young people to obtain successful outcomes in their personal lives, in employment education and training</p> <p>Develop stronger links between the District Children's Trust Partnership and Early Intervention Sub Group and the CSP with the objective of ensuring partners are aware of the delivery of the Early Intervention Strategy being developed during 2011-13</p> <p>To develop a major new centre for young people in Skelmersdale linked to town centre and college developments and build the centre's role as a Key Centre for young people's activities in the area as part of the town centre Youth Zone.</p>		
Objective 10: Create Safer and Cleaner Environments					
Target & Base Line	March 2012	Owner	Actions	Lead Officer	Funding
Improve street and environmental cleanliness (levels of graffiti, litter, detritus, fly posting and fly tipping)	March 2012	Borough Council	<p>Create a safer and cleaner environment through proactive initiatives and the use of legislative powers were appropriate.</p> <p>Key measures</p> <ul style="list-style-type: none"> Issue fixed penalty notices for littering and dog fouling offences 	Andrew Hill / Graham Concannon	Existing budgets

			<ul style="list-style-type: none"> Commence Legal proceedings for unpaid fixed penalty notices Commence prosecutions for fly tipping Deliver Proactive talks to schools and community groups Roll out community beat sweep initiatives in partnership with other agencies. Target hot spot areas for fly tipping with Street Officers Support the objectives of the multi-agency task and time group, which aims to improve recording processes and operational response to the management of graffiti. 		
Objective 11: Community Consultation & Engagement					
Target & Base Line	March 2012	Owner	Actions	Lead Officer	Funding
<p>The percentage of people that agree West Lancashire is a safe and secure place to live Baseline: 75% (2010)</p> <p>The percentage of people that agree investing in community safety contributes to the residents' quality of life Baseline 66% (2010)</p> <p>Ensure increased VCFS engagement in CSP Plan to support 'Engaged and Active Communities'</p>	<p>Target for 2012 to be maintained at 75%</p> <p>Target for 2012 to be maintained at 66%</p> <p>Adoption of CSP Plan as core CVS VCFS document</p>	<p>Borough / CSP</p> <p>West Lancs. CVS</p>	<p>Field community safety questions through the Council's Citizens Survey by December 2011.</p> <p>Deliver a minimum of two multi-agency supported Community Beat Events between by December 2012</p> <p>Hold a Face the People / or alternative community engagement activity by March 2012 to ensure visibility and accountability to the community.</p> <p>Regularly feedback to the community through the local media and WLBC web site on positive activities and interventions aimed at reducing crime and disorder and increasing community confidence.</p> <ul style="list-style-type: none"> Electronic Cascading of CSP Revised Plan with article on CSP to VCFS members CSP Plan and updates, events publicity via members updates as they are planned CSP Plan to be featured at CVS events and 5 	<p>Andrew Hill</p> <p>Greg Mitten</p>	<p>Existing budgets</p> <p>Existing core funding</p>

			<p>workshop spaces to be offered to priority leads for:</p> <ul style="list-style-type: none">○ ASB & ASBRAC○ Reducing Re-Offending○ Drugs Misuse○ Alcohol Misuse○ Domestic Violence <p>Work with young people through the Youth Council to identify areas of concern, provide a voice for these concerns and enable young people to feel part of the Community Safety Partnership through their positive contributions and campaigns.</p>		<p>Existing core funding</p> <p>Existing core funding</p>
--	--	--	--	--	---